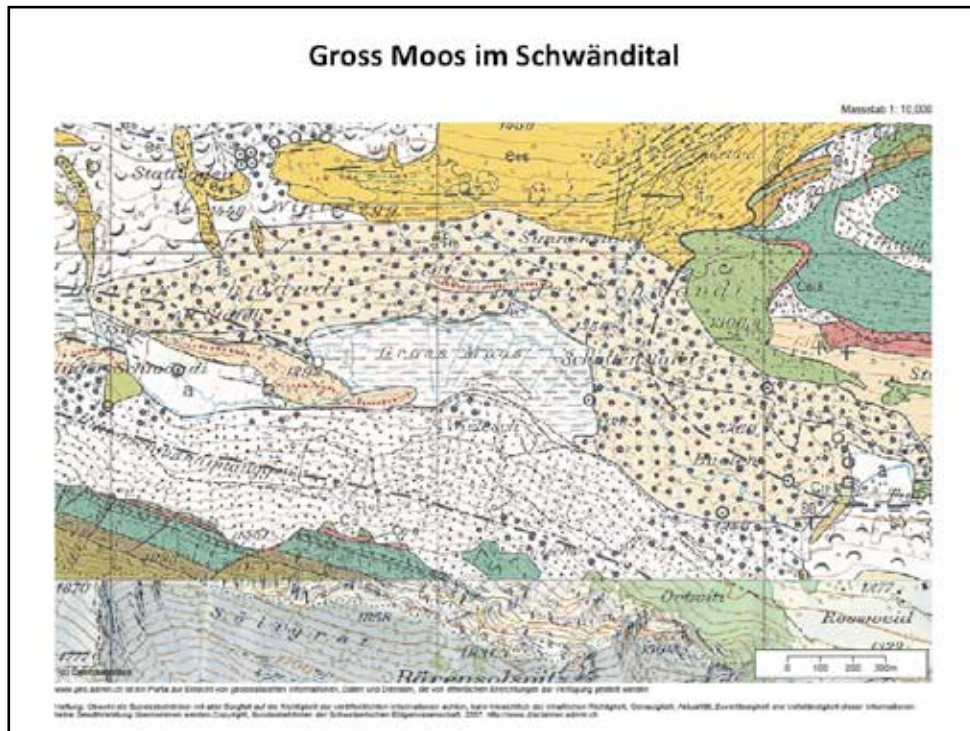


Gross Moos im Schwändital



©Daten: swisstopo: Topographischer Atlas und LK 1:25000

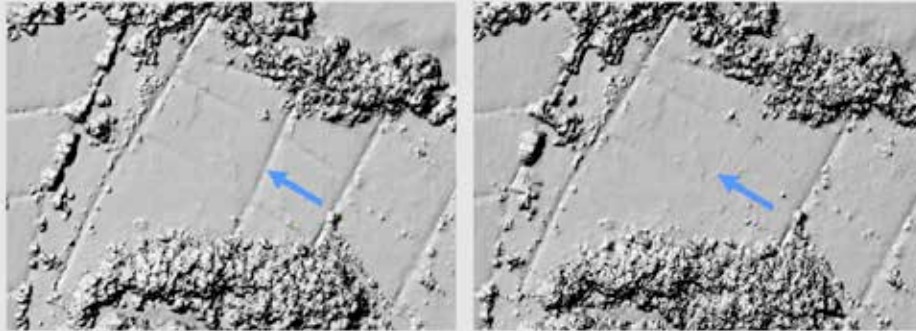


©Daten: swisstopo und WSL (Birmensdorf)





Gross Moos im Schwändital (GL) vor und nach Grabenverfüllung



Perspective view of shaded DSMs (50 cm resolution) representing two temporal stages of the same mire (Schwändital). Fine-scale terrain and surface changes such as the refilling of a drainage ditch or a tree being overturned (see arrows) are clearly documented. (Generating tool: ATE, a component of the photogrammetry workstation SocetSet from LHSystems).

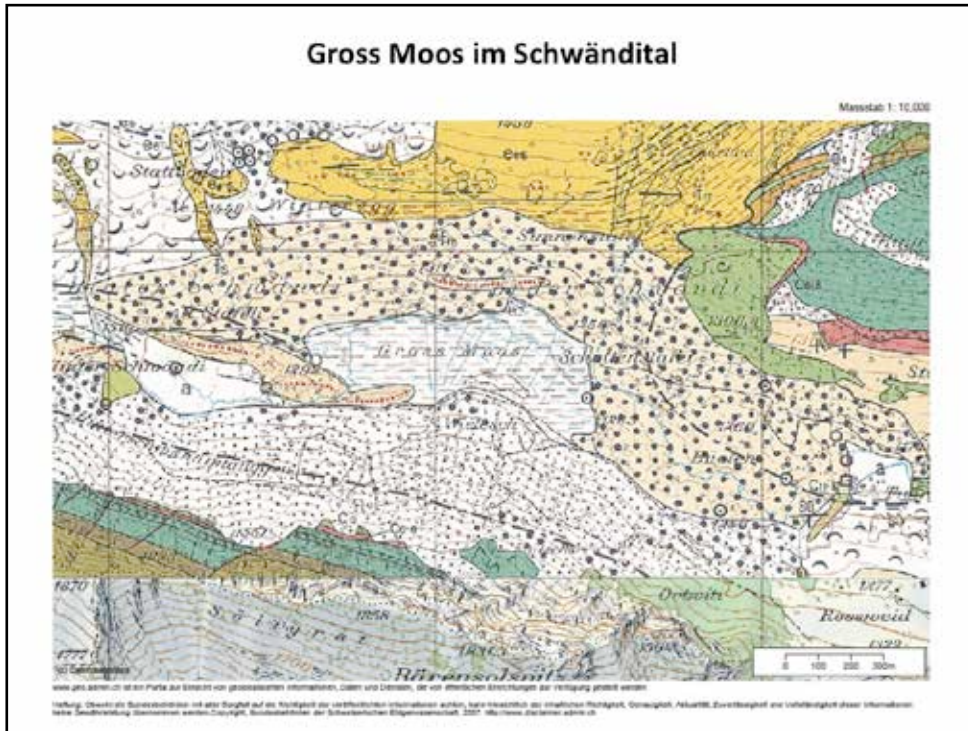
M. Küchler, K. Ecker, E. Feldmeyer-Christe, U. Graf, H. Küchler and L. T. Waser, 2004:
Combining remotely sensed spectral data and digital surface

models for fine-scale modelling of mire ecosystems. *Community Ecology* 5(1): 55-68. ©
Akadémiai Kiadó, Budapest.





Gross Moos im Schwändital



©Daten: swisstopo: Topographischer Atlas und LK 1:25000

